

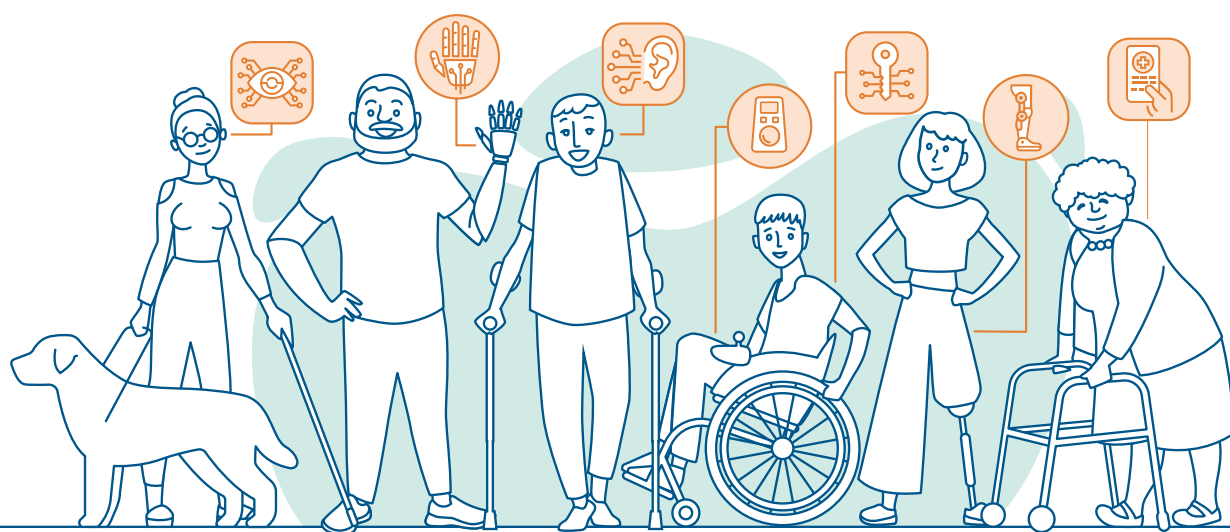
reva2027

BEPERK JE BEPERKING - LIMITEZ VOS LIMITES

INFORMATION EXHIBITION

on assistance and services
for people with disabilities,
young and old

FLANDERS EXPO GHENT
18, 19, 20 March 2027
09:30 - 17:00



Meet REVA	3
Practical information about REVA 2027	5
Hire costs and discounts	7
Setting up your stand	9
Themes at REVA2027	9
A few practical and technical arrangements	11
REVA2027 Exhibition Dates	12

revavzw

Beselarestaat 44, 8890 Dadizele, Belgium

T +32 478 90 81 88

reva@reva.be | www.reva.be

VAT BE 0434.045.306

BANK: BE47 7350 5574 5480



flanders expo

reva

BEPERK JE BEPERKING - LIMITEZ VOS LIMITES

Since
1989

Biennial event



Flanders Expo, Ghent



Belgium's largest fair about
living with disabilities



Free entry



reva2025 IN NUMBERS



170+ exhibitors



12.000+ visitors



30+ inclusive sports demos & initiatives



35+ REVAtalks lectures



15+ exhibitors for the blind and
visually impaired (Ziezo Vlaanderen)

VISITORS AT reva



People with disabilities and seniors



Family & relatives



Care providers and professionals

EXHIBITORS AT reva



Manufacturers & distributors of assistive devices



Service providers



Associations and governments

HIGHLIGHTS reva



REVAhome: independent advice on assistive devices



REVASchool: programmes for schools & care training



REVAcation: 15+ exhibitors from the tourism sector



REVAhousing advice: tips for accessible building & renovation



REVAtest: test track for mobility aids



Various **government services** as exhibitors



REVAgame: gaming tournaments

ACCESSIBILITY & SERVICES

Free assistance



Flemish Sign Language interpreters



Free wheelchair rental



Low-stimulus area



Care room



Free reserved parking



VISITOR & EXHIBITOR FEEDBACK

Exhibitor survey (REVA 2022, 2023, 2025)

- Pre-event information: 86%
- Offer at REVA: 81%
- Accessibility: 91%

Visitor survey (REVA 2022, 2023, 2025)

- Information & support before the fair: 89%
- REVA promotion: 83%
- Contacts made at the fair: 82%



Meet REVA

Reva is a biennial information exhibition on assistance and services for people with a disability, young and old. It is the biggest gathering in Belgium for people with a disability, the elderly, informal carers, service providers and other professionals.

REVA vzw goes for **impact**:

- › Impact for **people with a disability**, young and old, and their **carers** who are looking for solutions and possibilities.
- › Impact for **exhibitors** who want to present their products and services to the thousands of people who visit REVA.
- › Impact for **professional service providers** who want to update their expertise at REVA.
- › Impact for **students** who want to get to know a highly dynamic sector of assistance tools, services, government bodies, etc. They are the professionals of the future.

Do you want to reap the rewards as an exhibitor here?

This brochure will give prospective exhibitors plenty of information.

Want to find out more? Don't hesitate to contact us.

REVA is a **special meeting place** for exhibitors, professionals, visitors with a disability, carers, students, etc.

Are you an exhibitor who wants to showcase **your range, new resources, services, leisure and holiday activities, etc.**, to our thousands of visitors? Then you need to be at REVA2027.



Over three days at REVA, you will meet more people with a disability than at any other venue in Flanders. Something just as important as the **great turnout** is that exhibitors at REVA **rate** their interactions with visitors at 83%. (figures from the REVA2025 exhibitor survey).



Healthcare training programs show great **interest in REVA**. Their students are your future referrers, caregivers, and colleagues. At REVA, they get to know your offer.

What others have to say about REVA

REVA is a unique place that explores possibilities beyond 'disabilities' with the latest technologies and loving care. A truly inspiring event!

Prof. Steven Laureys, Affiliated with UZ Liège and Université Laval; neurologist at TRAINM/ BRAINM Antwerp and Amsterdam

For me, REVA is a source of information where I can discover new developments and try out adaptive sports, without any obligation.

Veerle Vermeylen, mother of a son with a disability

At REVA, there is no talk of pity for people with a disability, only of possibilities focused on solutions. I will certainly be coming back!

William Boeva, Stand-up comedian and visitor with a disability

REVA is a world where people with disabilities are warmly welcomed.

Roos Haers, visitor with a disability

REVA is interesting and educational – especially the workshops for our students and the questionnaires. A great addition to the lessons.

Karin Keuppens, teacher SAL Lier

REVA is about learning and making connections.

Valerie Vanuytrecht, VAPH

REVA is the place where we as a manufacturer present our innovations to the Belgian market, correctly inform our customers, and personally meet users.

Anthony Vanhie, Permobil

REVA is the fair to discover the latest assistive devices.

Marie Van den Broeck, My Add On

REVA is the fair where I don't feel alone or different because of my disability.

Angelique Snoeys, visitor with a disability

REVA is an essential fair in the healthcare landscape – it provides direction and creates connections.

Axelle Stevens, Dito vzw



Practical information about REVA 2027

18, 19 and 20 March 2027, Flanders Expo Ghent

HASSLE-FREE PARTICIPATION

Want to experience an easy participation with no fuss? Our team of experienced staff will do everything in their power to make your participation in REVA **completely hassle-free**.

Exhibitors rate the **information and support** provided at REVA at 90%

Registration dates in two phases

To puzzle together all the stands suitably, we will be accepting registrations in two phases this year.

PHASE 1 – FROM 2 FEBRUARY 2026

- › For whom? For all exhibitors wishing to book a stand of 48 m² or more.
- › You can freely choose your location, based on availability.

PHASE 2 – FROM 23 FEBRUARY 2026

- › For whom? For all prospective exhibitors, regardless of stand size.
- › Info: Please note the minimum stand size: 6 m² for non-commercial exhibitors and 9 m² for commercial exhibitors.
- › For startups and holiday accommodations, a separate tailor-made offer is available.



How to choose a stand

You can choose between several different sizes of stand. You are obviously welcome to combine a variety of different stands. Please indicate your preferred location and the desired size using the form on the website.

You can see which spaces are still available on the website:

<https://reva.be/beursplan/>

The plan shows two small, interconnected squares at regular intervals. These are the places where water and power connections are possible. Please take this into account when choosing your spot and setting up your stand, especially if you are combining multiple stands.

You will receive a provisional stand confirmation after you register. Sometimes, changes are unavoidable for organisational reasons. It goes without saying that we will contact you in the event of any such changes.

In the event that there is more than one candidate for the same location, priority will be given based on the registration time (first come, first served).

Only associations with no commercial activity can reserve an all-in 6 m² stand (see below). Obviously, they can also opt for a larger exhibition stand.

Do you offer products and services for blind and visually impaired people, do you work in the tourist sector or do you want space for your government body at REVA? If so, you will be eligible for space in one of the zones reserved for these exhibitors. Find out more in this brochure, in the 'Themes at REVA' section.



Hire costs and discounts

The cost of hiring your stand depends on the products and/or services that your company or association will be offering at the exhibition.

There are six categories with corresponding rates.

1. BASIC PRICE: EXHIBITORS WITH COMMERCIAL ACTIVITIES: €135/M² (EXCL. VAT)

Price excludes file charge for registration fee, administration and promotion costs: €235 (excl VAT)

For exhibition stands with three or four open sides and a front width of 7 m or more, a surcharge of €7.00/m² applies.

POSSIBLE DISCOUNTS FOR THE STANDS OF EXHIBITORS WITH COMMERCIAL ACTIVITIES

› REGISTER BEFORE 17 October 2026?

If you do so, you will benefit from a discount of €5/m² on the price of €135/m², as long as you pay a deposit of 30% in autumn 2026. You will receive an invoice for this deposit.

› HIRE A STAND LARGER THAN 80 m²

If you do so, you will benefit from a discount of €15/m² on the basic price of €121 m² from the 81st metre onwards.

2. PRICE FOR EXHIBITORS WITH MIXED ACTIVITIES: €93/M² (EXCL. VAT)

Price excludes file charge for registration fee, administration and promotion costs: €165 (excl. VAT)

Exhibition stands with three or four open sides and a depth of 8m are subject to a supplement of €7.00/m².

If your organisation offers paid services but is also active in advocacy work and/or uses volunteers, you may be eligible for the 'exhibitors with mixed activities' rate. Contact the exhibition secretaries for more information.

3. PRICE FOR EXHIBITORS WITHOUT COMMERCIAL ACTIVITIES: €58/M² (EXCL. VAT)

Price excludes file charge for registration fee, administration and promotion costs: €118 (excl VAT)

Exhibition stands with three or four open sides and a depth of 8m are subject to a supplement of €7.00/m².

If you do not supply any paid services or sell/hire any products, if you are mainly based on voluntary work or you are a government body, the rate for exhibitors without commercial activities will apply to you.

This rate is therefore intended for interest groups, self-help groups, public services, educational institutions, and similar organizations.

4. SMALL INFORMATION STAND: €700 (INCLUDING VAT)

Price includes file charge for registration fee, administration and promotion costs.

Do you want to register an organisation with no commercial activities, such as an interest group, user organisation, sports club, etc. and do you only need a small, 6m² information stand? If so, one of our all-in stands is probably a good choice.

Only one stand can be rented per association

This price includes a lot of what you need: walls, carpet, electricity, cleaning, lighting, etc.

Find out more here: <https://reva.be/standenbouw/>

5. HOLIDAY MARKET: €980.00 (EXCL. VAT)

Do you run an accessible tourist accommodation? Do you offer adapted holidays? Or do you have a recreational offer that people with disabilities can also enjoy? Then you can showcase it all in the REVAcation Village at REVA2027!

This year, REVAcation once again features a shared holiday market, where accessible accommodations can rent a space.

AS AN EXHIBITOR, YOU RECEIVE:

- › An exhibitor table
- › Clear name signage
- › A dedicated page on reva.be

Price includes registration and administration fees (€235), insurance (€120), furniture, and daily stand cleaning.

6. THE STARTUP ZONE: €920.00 (EXCL. VAT)

Are you a **startup** with an innovative offer for REVA's audience?

Is your product or service aimed at people with disabilities, seniors, informal caregivers, service providers, or other professionals? Then the Startup Zone at REVA2027 is the place to showcase your offer.

AS AN EXHIBITOR, YOU RECEIVE:

- › An exhibitor table
- › Clear name signage in the Startup Zone
- › A mention on a dedicated webpage on reva.be, presenting all startups

The price includes all costs: insurance (€120.00), registration and administration fees (€235.00), furniture (exhibitor table and chair), and daily stand cleaning.

YOU CAN PARTICIPATE IN REVASTARTUP IF:

- › Your offer is innovative.
- › Your offer is aimed at people with disabilities, seniors, informal caregivers, or (care) professionals.
- › You have not previously participated in REVA as an exhibitor.
- › You have professional status and a company registration number. This offer is not intended for private individuals.

GENERAL

Want to know what it will cost? Use the 'calculate the price of your stand' button.

<https://reva.be/en/calculate-the-price-of-your-exhibition-stand/>

FLANDERS EXPO COSTS

The following additional costs will be charged and invoiced by Easyfairs/Flanders Expo for all stands, with the exception of small information stands:

- › Electricity: minimum 1 x 16 A - 3520 W
- › Third-party liability cover for the exhibitor and comprehensive insurance: €120 (excluding VAT), for a value up to €20,000; higher values are subject to proportional increases. The comprehensive insurance premium depends on the value of the products. The exhibitor is obliged to submit a list of materials, stating their value.

Setting up your stand

You can set up your own stand, hire someone to do it or make use of Flanders Expo's services (invoiced by them).

MODULAR STAND SETUP: € 79.50/M²

Want to create a beautiful stand without any hassle? Then you can opt for a modular stand setup. The cost of this stand is not included in the hire price of your stand and will be invoiced to you by Flanders Expo. For more information, visit our website: <https://reva.be/en/stand-construction/>

OTHER OPTIONS FOR STAND SET-UP WITH FLANDERS EXPO / EASYFAIRS

Would you like something different from the standard modular stand?

Discover the **alternative stand concepts** in the **online order form from Easyfairs**. You can also rent additional materials and furniture there.

Each exhibitor will receive a **unique URL** to the Flanders Expo order form starting from June 2026.

They will make you an offer and invoice you directly afterwards.

For any questions, please contact exhibitor@easyfairs.com or call **+32 (0)9 241 96 11**

Themes at REVA

REVATECH

At REVA2027, technology will take center stage with the theme **REVAtech**.

Technology is now everywhere and offers more and more possibilities – both for users and professionals. At REVA2027, you will discover the latest innovations, experience their impact on support and care, and see how they contribute to greater independence in daily life.

Does your offer fit this theme? Then this is definitely the right moment to highlight it!

At the same time, REVA2027 will once again be the familiar fair we all know – with a wide range of new assistive devices, services, and associations by and for people with disabilities.

So even if your offer is not directly related to technology, REVA2027 is still the place to be!

ZIEZO VLAANDEREN

Is your offer aimed at people who are blind or visually impaired? Do you provide assistive tools for this target group? Or does your organization represent people who are blind or visually impaired?

Then you can choose a stand in the ZieZo Vlaanderen zone – making it easy for blind and visually impaired visitors to find your offer.

REVASTARTUP

Would you like to showcase your innovative offer at REVA2027? Then you may qualify for a spot in the Startup Zone, designed especially for entrepreneurs who are bringing innovation to the care and rehabilitation sector.

You can find more information about the conditions and stand prices for the startup area above.

WITH EVEN MORE EXTRAS

Other important highlights at REVA2027 include:

REVAHOME

Organized in collaboration with the Occupational Therapy program of HOGENT.

This stand brings together a variety of small aids for the kitchen, bathroom, home, leisure, and gardening. Visitors can attend workshops and receive housing advice from an architect.

If your products or services are related to living or leisure activities in and around the home, you can discuss with HOGENT lecturers how your offer could be featured at REVAhome.

REVAG-SPORT

At REVA, many G-sport (adaptive sports) clubs will present their activities, in collaboration with G-Sport Vlaanderen.

REVACATION VILLAGE

This area brings together all exhibitors offering tourism-related services in one place.

Do you have a tourism offer? Then book your place in this zone!

GOVERNMENT VILLAGE

Here you'll find several public services gathered in one location.

REVATALKS

Featuring inspiring testimonials and lectures on new technologies, assistive tools, living with a disability, therapies, and more.

YOUR DEMO SESSION AT REVA2027

You can also give a demo session for your customers and exhibition visitors at REVA2027. We provide a demonstration space at the exhibition which you can rent for a certain time in return for a fee. We announce these sessions in advance and you can advertise them yourself as well.



A few practical and technical arrangements

Below you will find a selection of the exhibition regulations. For the full list of arrangements, please refer to the exhibition regulations on the website. This overview does not in any way replace the exhibition regulations.

REGISTRATION AND EXHIBITION INFORMATION

- › Registration through the exhibitor portal on the website constitutes a binding agreement.
- › Permission to set up the stand and effectively participate in the exhibition can only be granted following full payment of the invoice.
- › Until 18 October 2026, an option on a stand location remains valid for one month. From 19 October 2026 until 18 February 2027, an option remains valid for one week. After 18 February 2027, it will no longer be possible to take an option.
- › Information on cancellation costs can be found in Chapter 6 of the exhibition regulations on the website.
- › Exhibitors wishing to share a stand must notify the secretary. They must register as separate exhibitors and are to be invoiced separately. In all other cases, you can only be listed as a separate exhibitor on the website and receive promotional material if the additional exhibitor pays the handling fee.
- › For safety reasons, a speed limit of 5 km/h applies to all vehicles (bicycles, wheelchairs, scooters, etc.) in the corridors of the exhibition.
- › It is forbidden to hand out samples or printed materials anywhere except on the stand. It is also forbidden in other public areas such as terraces, the entrance hall, corridors, toilets, car parks, etc.
- › Exhibitors wishing to organise an attraction at their stand for an audience to watch must first ask permission from REVA, due to the possibility of disruption for other exhibitors. Also remember to take into account the costs for Sabam and the Fair Compensation (Billijke Vergoeding), if applicable.
- › It is forbidden to place objects outside the perimeter of your hired space.
- › Exhibitors are permitted to sell products directly at their stand to a limited extent, provided they have an easily and personally accessible after-sales service with a physical address in the Benelux. The maximum selling price per product is €120.
- › This price must be fixed and clearly displayed at the stand.
- › Payment may only be accepted in euros (EUR).

STAND SET-UP

- › Please note the location of nearby power sockets.
- › The walls adjacent to the corridors must be clear and accessible to the public.
- › All walls adjacent to a neighbour must reach a height of 2.5 metres.
- › These walls cannot be any higher or lower. You can only build higher if separated from your neighbour's wall by one metre, and only if the structure or advertisement is in no way obstructive to them. Transparent construction profiles on corners are an exception to this, but between the profiles, the walls should be no higher than 2.5 metres.
- › Anyone wishing to build higher than 2.5 metres must apply to REVA and obtain approval from their immediate neighbours.
- › Every stand must be illuminated.
- › At least one month before the start of the fair, you must submit your stand design to REVA vzw and Easyfairs.
- › Flanders Expo/Easyfairs will make an online order form available where each exhibitor can order additional equipment and services (furniture, electricity, etc.). Each exhibitor will receive, starting from June 2026, a unique URL linking to the Flanders Expo order form.

- › Every exhibitor at REVA is automatically covered by the civil liability insurance and all-risk insurance offered by Easyfairs.
- › The cost amounts to €120 (excl. VAT) for an insured value up to €20,000.
- › If you need to insure a higher value, Easyfairs will increase the cost proportionally.
- › Exhibitors who do not wish to make use of these insurances must activate the opt-out option in accordance with the conditions set by Easyfairs.

REVA2027 Exhibition Dates

STAND SET-UP

TUESDAY, 16 MARCH FOR ALL EXHIBITORS WITH BARE SURFACES (NOT FOR MODULAR STANDS)

- › **8.00 - 22.00:** lorries permitted

WEDNESDAY, 17 MARCH FOR ALL EXHIBITORS

- › **8.00 - 14.00:** lorries, cars and small vans permitted
- › **14.00 - 20.00:** only cars and small vans permitted
- › All stands must be set up by 20.00

Setting up before Tuesday 16 March is only possible if Easyfairs gives you permission to do so and on the condition that you pay the costs charged by Easyfairs.

EXHIBITION DAYS

THURSDAY, 18 MARCH

- › **08.30 - 18.00:** open for exhibitors
- › **09.30 - 17.00:** open to the public

FRIDAY, 19 MARCH

- › **08.30 - 18.00:** open for exhibitors
- › **09.30 - 17.00:** open to the public

SATURDAY, 20 MARCH

- › **08.30 - 24.00:** open for exhibitors
- › **09.30 - 17.00:** open to the public

DISMANTLING

SATURDAY, 20 MARCH

- › **17.15 - 24.00:** gates will not open until all visitors have left the hall.

SUNDAY, 21 MARCH

- › **08.00 - 18.00**

By way of exception, you can still remove stand materials on Monday 22 March, subject to permission from Easyfairs and provided you pay for any additional hours of security and other costs charged by Easyfairs.